



**U.S. ARMY CORPS OF ENGINEERS  
REGULATORY PROGRAM  
APPROVED JURISDICTIONAL DETERMINATION FORM (INTERIM)  
NAVIGABLE WATERS PROTECTION RULE**

**I. ADMINISTRATIVE INFORMATION**

Completion Date of Approved Jurisdictional Determination (AJD): 11/24/2020

ORM Number: SWF-2020-00368

Associated JDs: N/A

Review Area Location<sup>1</sup>: State/Territory: Texas City: Seagraves County/Parish/Borough: Gaines

Center Coordinates of Review Area: Latitude N 32.944212° Longitude W 102.564997°

**II. FINDINGS**

**A. Summary:** Check all that apply. At least one box from the following list MUST be selected. Complete the corresponding sections/tables and summarize data sources.

- The review area is comprised entirely of dry land (i.e., there are no waters or water features, including wetlands, of any kind in the entire review area). Rationale: Project information provided by the consultant and supporting data indicate that the project area is upland (dry land). The project area currently is within the city limits of Seagraves. The project area is without water features, streams, and/or wetlands. The proposed work will not result in the placement of fill or dredged material within a water feature or waters of the U.S.
- There are “navigable waters of the United States” within Rivers and Harbors Act jurisdiction within the review area (complete table in Section II.B).
- There are “waters of the United States” within Clean Water Act jurisdiction within the review area (complete appropriate tables in Section II.C).
- There are waters or water features excluded from Clean Water Act jurisdiction within the review area (complete table in Section II.D).

**B. Rivers and Harbors Act of 1899 Section 10 (§ 10)<sup>2</sup>**

§ 10 Name	§ 10 Size	§ 10 Criteria	Rationale for § 10 Determination
N/A.	N/A.	N/A.	N/A.

**C. Clean Water Act Section 404**

Territorial Seas and Traditional Navigable Waters ((a)(1) waters): <sup>3</sup>			
(a)(1) Name	(a)(1) Size	(a)(1) Criteria	Rationale for (a)(1) Determination
N/A.	N/A.	N/A.	N/A.

Tributaries ((a)(2) waters):			
(a)(2) Name	(a)(2) Size	(a)(2) Criteria	Rationale for (a)(2) Determination
N/A.	N/A.	N/A.	N/A.

Lakes and ponds, and impoundments of jurisdictional waters ((a)(3) waters):			
(a)(3) Name	(a)(3) Size	(a)(3) Criteria	Rationale for (a)(3) Determination
N/A.	N/A.	N/A.	N/A.

<sup>1</sup> Map(s)/figure(s) are attached to the AJD provided to the requestor.

<sup>2</sup> If the navigable water is not subject to the ebb and flow of the tide or included on the District’s list of Rivers and Harbors Act Section 10 navigable waters list, do NOT use this document to make the determination. The District must continue to follow the procedure outlined in 33 CFR part 329.14 to make a Rivers and Harbors Act Section 10 navigability determination.

<sup>3</sup> A stand-alone TNW determination is completed independently of a request for an AJD. A stand-alone TNW determination is conducted for a specific segment of river or stream or other type of waterbody, such as a lake, where upstream or downstream limits or lake borders are established. A stand-alone TNW determination should be completed following applicable guidance and should NOT be documented on the AJD Form.



**U.S. ARMY CORPS OF ENGINEERS  
REGULATORY PROGRAM  
APPROVED JURISDICTIONAL DETERMINATION FORM (INTERIM)  
NAVIGABLE WATERS PROTECTION RULE**

Adjacent wetlands ((a)(4) waters):			
(a)(4) Name	(a)(4) Size	(a)(4) Criteria	Rationale for (a)(4) Determination
N/A.	N/A.	N/A.	N/A.

**D. Excluded Waters or Features**

Excluded waters ((b)(1) – (b)(12)): <sup>4</sup>			
Exclusion Name	Exclusion Size	Exclusion <sup>5</sup>	Rationale for Exclusion Determination
N/A.	N/A.	N/A.	N/A.

**III. SUPPORTING INFORMATION**

**A. Select/enter all resources** that were used to aid in this determination and attach data/maps to this document and/or references/citations in the administrative record, as appropriate.

Information submitted by, or on behalf of, the applicant/consultant: [Reference documents within the electronic project file provided by WTC Engineers/Surveyors.](#)

This information is sufficient for purposes of this AJD.

Rationale: [N/A](#)

Data sheets prepared by the Corps: [Title\(s\) and/or date\(s\).](#)

Photographs: [Aerial: Google Earth Imagery, February 20, 2019](#)

Corps site visit(s) conducted on: [Date\(s\).](#)

Previous Jurisdictional Determinations (AJDs or PJDs): [ORM Number\(s\) and date\(s\).](#)

Antecedent Precipitation Tool: [provide detailed discussion in Section III.B.](#)

USDA NRCS Soil Survey: [Title\(s\) and/or date\(s\).](#)

USFWS NWI maps: [ESRI Managed Imagary \(SWF Regulatory Viewer\), November 24, 2020](#)

USGS topographic maps: [Seagraves, TX 1:24,000](#)

**Other data sources used to aid in this determination:**

Data Source (select)	Name and/or date and other relevant information
<a href="#">USGS Sources</a>	<a href="#">National Hydrography Dataset (SWF Regulatory Viewer) November 24, 2020</a>
<a href="#">USDA Sources</a>	<a href="#">N/A.</a>
<a href="#">NOAA Sources</a>	<a href="#">N/A.</a>
<a href="#">USACE Sources</a>	<a href="#">N/A.</a>
<a href="#">State/Local/Tribal Sources</a>	<a href="#">N/A.</a>
<a href="#">Other Sources (enclosed)</a>	<a href="#">Location map provided by WTC Engineers/Surveyors</a>

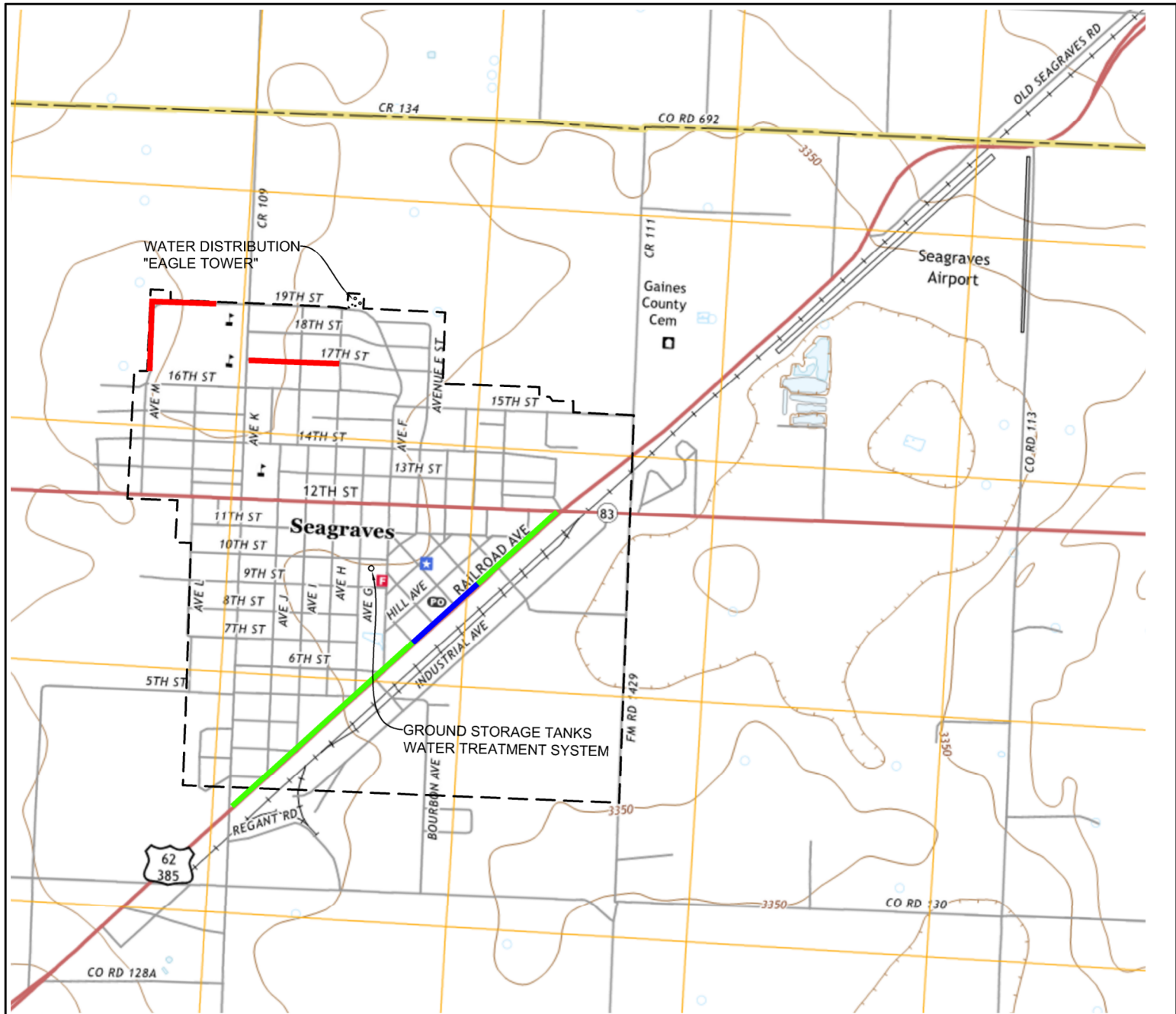
**B. Typical year assessment(s):** [N/A](#)

**C. Additional comments to support AJD:**

[Enclosure: Location Map](#)

<sup>4</sup> Some excluded waters, such as (b)(2) and (b)(4), may not be specifically identified on the AJD form unless a requestor specifically asks a Corps district to do so. Corps districts may, in case-by-case instances, choose to identify some or all of these waters within the review area.

<sup>5</sup> Because of the broad nature of the (b)(1) exclusion and in an effort to collect data on specific types of waters that would be covered by the (b)(1) exclusion, four sub-categories of (b)(1) exclusions were administratively created for the purposes of the AJD Form. These four sub-categories are not new exclusions, but are simply administrative distinctions and remain (b)(1) exclusions as defined by the NWPR.



**SEAGRAVES QUADRANGLE**

TEXAS

7.5-MINUTE SERIES



QUADRANGLE LOCATION

CONTOUR INTERVAL 10 FEET  
NORTH AMERICAN VERTICAL DATUM OF 1988

This map was produced to conform with the National Geospatial Program US Topo Product Standard, 2011. A metadata file associated with this product is draft version 0.6.18

**MAP LEGEND**

- SERVICE AREA
- 2" TO 6" WL
- 4" TO 6" WL
- 8" TO 8" WL

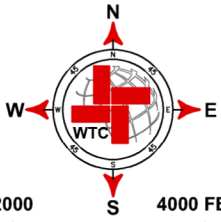
**ROAD CLASSIFICATION**

- |               |                  |                 |          |
|---------------|------------------|-----------------|----------|
| Expressway    |                  | Local Connector |          |
| Secondary Hwy |                  | Local Road      |          |
| Ramp          |                  | 4WD             |          |
|               | Interstate Route |                 | US Route |
|               | State Route      |                 |          |

1	2	3
4	5	
6	7	8

1 Pleasant Hill  
2 Tokio SE  
3 Wellman  
4 Seagraves NW  
5 Loop  
6 Seagraves SW  
7 Seagraves SE  
8 Loop SW

ADJOINING QUADRANGLES



SCALE: 1" = 2000'

**GAINES COUNTY  
CITY OF SEAGRAVES, TX  
USGS TOPOGRAPHIC MAP**

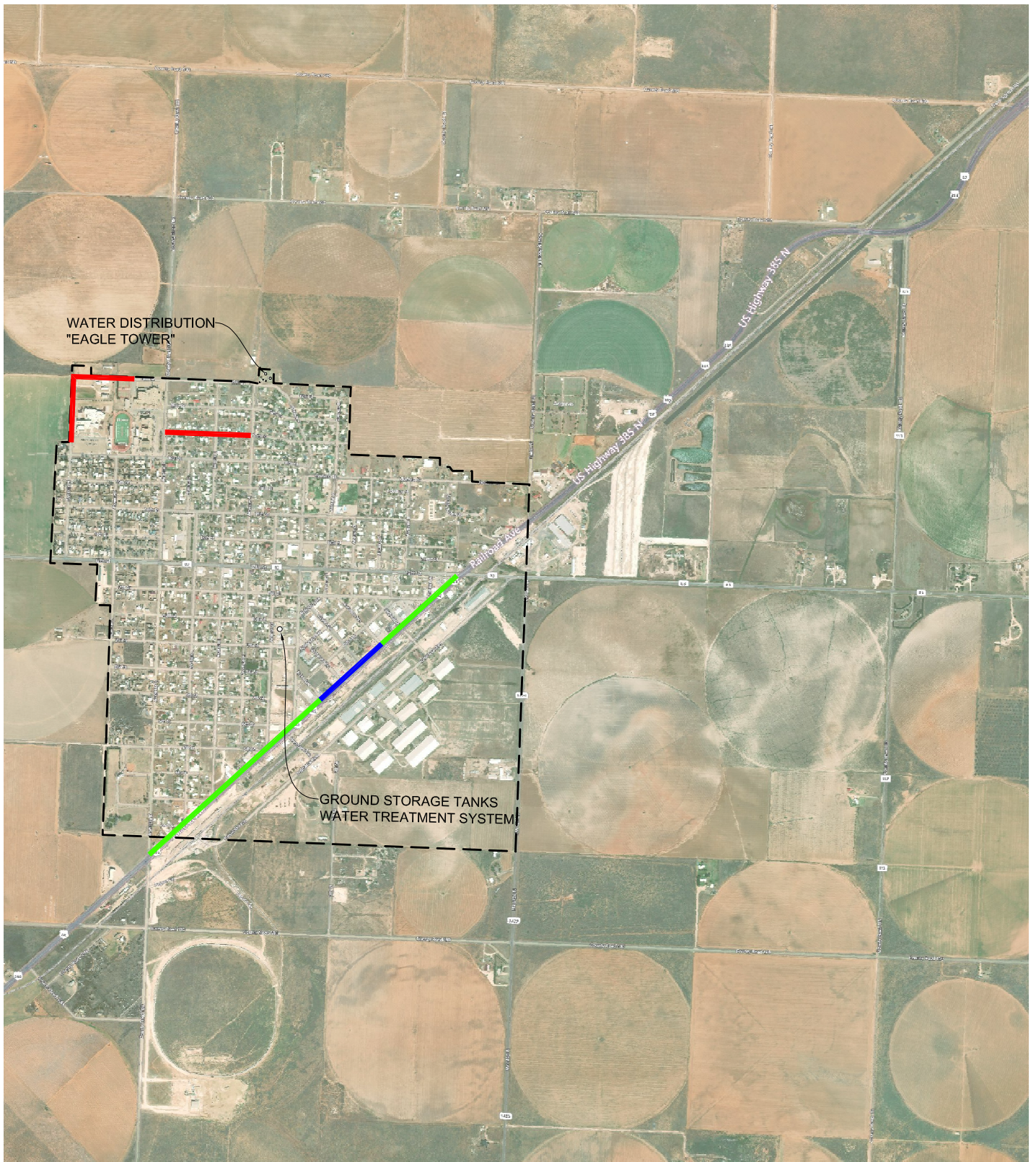


**ENGINEERS | SURVEYORS**  
TEXAS REGISTERED ENGINEERING FIRM F-2746  
TEXAS REGISTERED SURVEYOR FIRM #100792-00

**W T C, INC.**  
405 S.W. 1st Street  
Andrews, TX 79714  
(432) 523-2181

DRAFT: AJ  
JOB NO.: WTC54226  
DATE: 09/03/2020



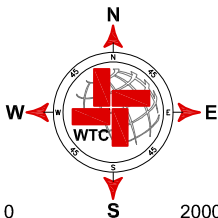


WATER DISTRIBUTION  
"EAGLE TOWER"

GROUND STORAGE TANKS  
WATER TREATMENT SYSTEM

**MAP LEGEND**

- SERVICE AREA
- 2" TO 6" WL
- 4" TO 6" WL
- 8" TO 8" WL



2000 0 2000 4000 FEET

SCALE: 1" = 2000'

**GAINES COUNTY  
CITY OF SEAGRAVES, TX  
AERIAL MAP**

**WTC**  
ENGINEERS | SURVEYORS  
TEXAS REGISTERED ENGINEERING  
FIRM F-2746  
TEXAS REGISTERED SURVEYOR FIRM  
#100792-00

**W T C, INC.**  
405 S.W. 1st Street  
Andrews, TX 79714  
(432) 523-2181

DRAFT: AJ  
JOB NO.: WTC54226  
DATE: 09/03/2020